

G. Marconi Airport



Catchment Area

A crossroads for national and international business and freight traffic, Bologna is situated on Italy's major road and railway connections. Only 6 kms from the city's historical centre and the Central Station, with a rapid public service to connect them, it is one of Italy's top intercontinental airports. Thanks to its geographical position, the catchment area for the Guglielmo Marconi city airport covers 19% of Italy's population: a total of 11 million inhabitants making around 5.4 journeys per person per year, almost 70% of which departing from Bologna. In a wider perspective, the catchment area includes up to 33% of the population, nearly 20 million inhabitants.

BolognaSystem

DISTANCE FROM CITY CENTRE AND CENTRAL RAILWAY STATION	6 km
TRAVEL TIME FROM CITY CENTRE	15 minutes
TOTAL PASSENGERS IN 2008	4,216,000
RUNWAY LENGTH	2,800 m
CARPARK SURFACE AREA	125,000 sqm
PARKING SPACES	5,000
NUMBER OF GATES	22
CHECK-IN DESKS	74
SHOPPING AREA	4,000 sqm

Key Developments in the Airport

Over the coming years, the G. Marconi Airport will undergo important changes that will greatly enhance the infrastructure in terms of passenger traffic and freight handling, as well as the surrounding areas and transportation to and from the city centre and other important business districts. The city development plan has opened up the possibility of developing new functions using free sites of the airport.

In addition to the new possibilities offered by the city development plans, at the beginning of 2008 the airport also presented its **industrial plan**.

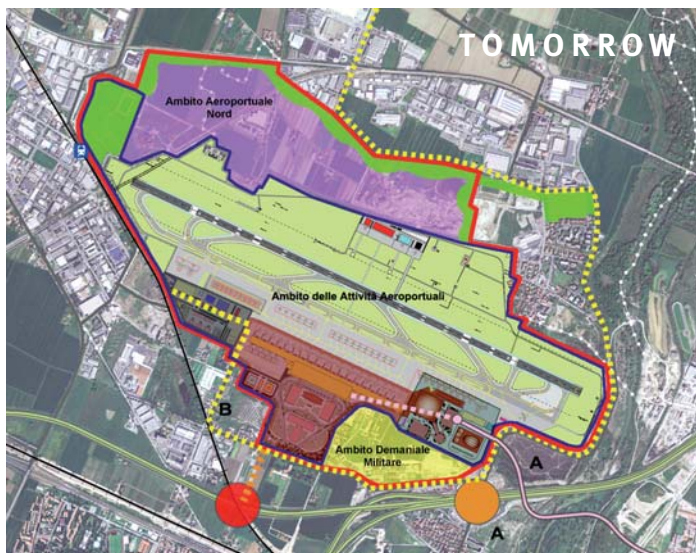
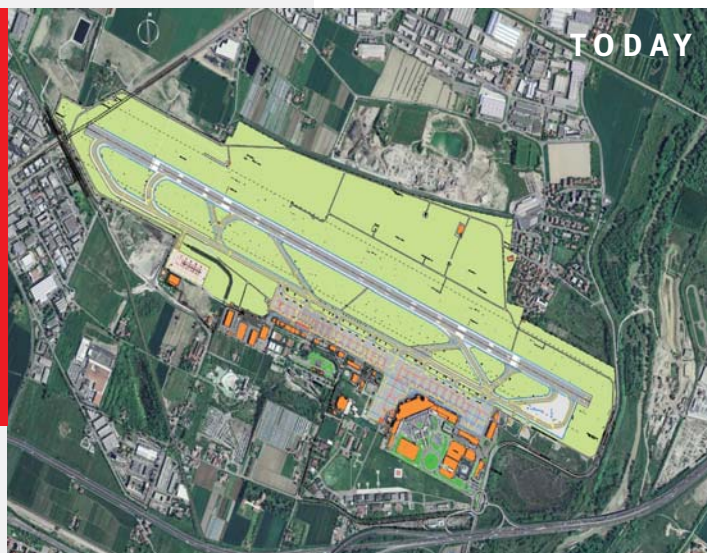
It is an ambitious plan aimed primarily at upgrading infrastructure, from Passenger Terminal requalification and the construction of a new departures hall, to the extension of aircraft aprons and car parks and the construction of the station for the People Mover, the raised monorail which will connect the airport directly to the new High Speed Central Station from 2013.

The first phase of the plan, which is due to be implemented over the next five years, is aimed at generally improving the environment of the existing terminal in terms of comfort, increasing the range of services on offer and streamlining operations. It will be followed by a second phase dedicated to the construction of a new terminal. G. Marconi Airport aims to increase the volume of traffic to 10 million passengers per year, consolidating business traffic and greatly increasing the volume of low-cost traffic. Upgrading the airport and its traffic goes hand-in-hand with opportunities for establishing new non-aviation-related activities through partnerships and collaborations with private investors.

G. Marconi Airport

For this purpose, in July 2008 an agreement was signed between local institutions and the airport allowing the requalification of the sites to begin. In particular, the agreement paves the way for **new integrative and complementary activities** for a gross surface area of 96,000 sqm and a net surface area of 65,000 sqm. **Integrative activities** include passenger services and assistance and freight handling, as well as activities that are directly linked to the running functions of the airport, such as catering and courier warehousing. **Complementary activities** include administration, conferences, hospitality and shopping, logistics and urban recreational activities.

BolognaSystem



Shopping Area & Marconi Business Lounge

The plans provide new scope also for the airport's vibrant shopping area, which already features some of the territory's exclusive top brands and products, such as Ducati, La Perla, Mandarina Duck, Furla and Piquadro, and which will enhance the airport's prestige and international visibility while contributing to supporting and promoting throughout the world the city's and region's traditions of manufacturing excellence. Also to be noted is the 500 sqm Marconi Business Lounge (MBL) for first class business travellers, which is ideal for organising business meetings. The MBL is equipped with exclusive services such as the "Fast Track" which gives the possibility to directly access the boarding gates.



The Guglielmo Marconi Airport

As one of Italy's major intercontinental airports, with over 4 million passengers per year, the Guglielmo Marconi receives flights of up to 5,000 nautical miles radius and boasts cutting edge safety and environmental protection technology. With swift connections to the main road arteries and the city's services, the airport is the point of departure for flights to all major Italian, European, Mediterranean and Central American destinations. Furthermore, with a bank, a post office, a financial services centre, a travel agency and car rental facilities, the Marconi caters for all the demands of travel with the highest standards of service. The airport also provides 5,000 parking spaces with an efficient vehicle safety and maintenance service (Car Valet).