



Catchment area

A crossroads for national and international freight and passenger transportation, Bologna is situated on the main road and rail arteries. One of Italy's major intercontinental airports, the G. Marconi Airport, lies only 6 km from the Bologna's historical centre, to which it is connected by public transportation. Given its geographical location, the catchment area of the Guglielmo Marconi city airport embraces 19% of Italy's entire population. A total of 11 million inhabitants making around 5.4 journeys each per annum, almost 70% of which departing from Bologna. In a long-range perspective, the catchment area includes up to 33% of the population, almost 20 million inhabitants.



DISTANCE FROM CITY CENTRE AND CENTRAL RAILWAY STATION	6 km
TRAVEL TIME FROM CITY CENTRE	15 minutes
TOTAL PASSENGERS IN 2007	4,300,000
RUNWAY LENGTH	2,800 m
CARPARK SURFACE AREA	125,000 sqm
PARKING SPACES	5,000
NUMBER OF GATES	22
CHECK-IN DESKS	74
COMMERCIAL AREA	4,000 sqm

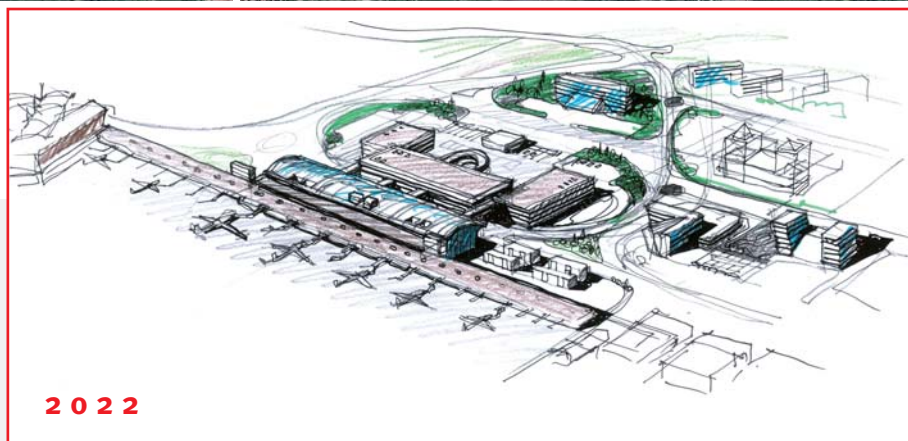
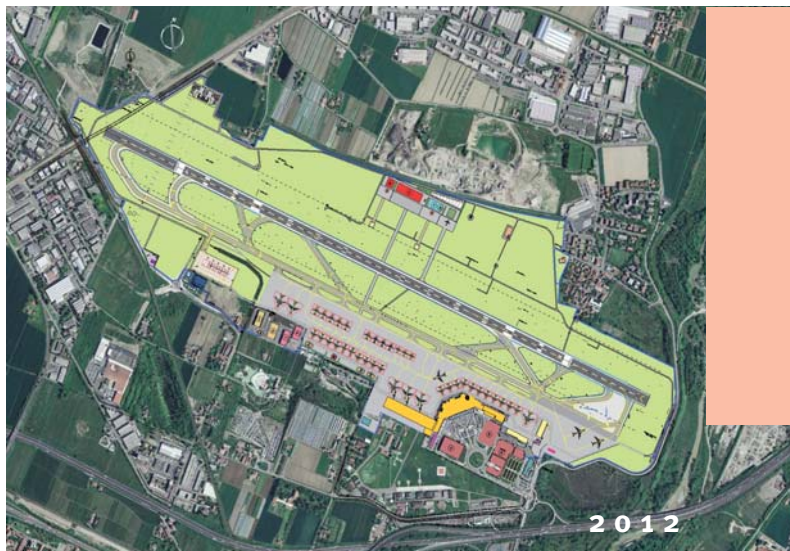
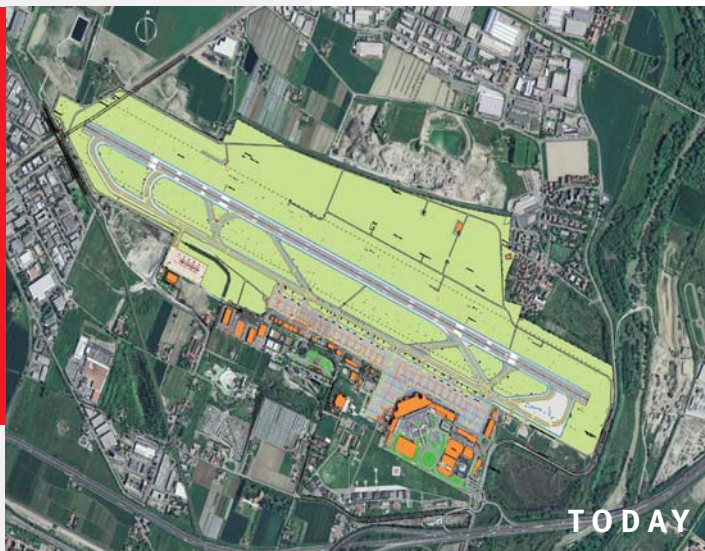
Key Airport developments

Over the coming years, the G. Marconi Airport will undergo important changes that will greatly enhance the infrastructure in terms of passenger traffic and freight handling, as well as the surrounding areas and transportation to and from the city centre and other important business districts. The city development plan drafted by the public authorities includes the option of developing complementary logistics, conference, exhibition, hospitality, retail and business centre activities using free sites to the south of the airport, aimed at supporting and improving the airport's competitiveness. **Over the coming months, a Territorial Agreement will be signed between the local authorities and the airport to define precisely the land-use, thus paving the way for development works to commence.** Besides the potentiality offered by the city development plans, in the first few months of 2008 the G. Marconi Airport presented its 2008-2012-2022 industrial plan. It is an ambitious plan targeting the **upgrading of the infrastructure: from Passenger Terminal requalification and the construction of a new boarding area, to the extension of aircraft aprons and car parks, the construction of the People Mover station and the installation of a new automated baggage handling system.** This first phase of the works is due to take place over the next five years, and is aimed at improving the general environment of the existing terminal in terms of comfort, range of services on offer and streamlining operations. **A second phase will add to the improvements with the construction of a whole new Terminal.** Owing to estimated investments of over 200 million euros over the next five years, and 650 million euros through 2022, the G. Marconi Airport aims to increase the volume of traffic to 10 million passengers per annum, to consolidate business traffic and to greatly increase the volume of low-cost traffic.

G. Marconi Airport

The upgrading of the airport and its traffic will be accompanied by opportunities for establishing new non-aviation-related activities, which will be made possible through partnerships and collaborations with private investors. Following the inauguration of the Business Lounge, the new 500 sqm area, which is ideally suited for moments of pleasant relax or important business meetings, and the airport's vibrant shopping area, which already exhibits some top brands and products that are exclusive to Bologna, such as Ducati, Ferrari, La Perla, Mandarina Duck and Furla, will undergo further development to enhance the airport's prestige and international visibility, while contributing to supporting and promoting city and regional traditions of excellence throughout the world. Lastly, in order to improve the airport's accessibility and regional, national and international appeal, plans are foreseen for new links with the city centre and key business districts: they range from the People Mover, the modern raised monorail which will connect the airport directly to the Central Station as from 2011, and the SFM (the Metropolitan Railway System), for which a new station will be built next to the airport, to the improvement of road connections.

BolognaSystem



Guglielmo Marconi Airport

As one of Italy's major intercontinental airports, the G. Marconi Airport can handle flights of up to 5,000 nautical mile range and boasts cutting edge safety and environmental protection technology. **In 2006, the Airport crossed the 4 million passenger threshold.** With swift connections to the main road arteries and the city's services, the airport is the point of departure for flights to all major Italian, European and Mediterranean cities. In addition, Bologna is connected to intercontinental destinations, primarily in North and Central America. Furthermore, owing to a bank, a branch of the Post Office, a financial services centre, a travel agency and car rental facilities, the Airport caters for all the demands of travel with services geared to the highest standards of quality. Providing 5,000 parking spaces for short-and long-term stays, as well as an efficient Car Valet service for the safekeeping and maintenance of cars.